

ELEVATE

Volvo S60 / S60R / V70 / V70R Aerodynamic Kit

Thank you for your purchase of an ELEVATE Aerodynamic Component.

Below are a few guidelines to follow in maximizing the appearance and performance of your ELEVATE product in addition to images communicating the method of attachment for the parts. Please be sure to share these guidelines with your fitment/paint shop before they start the project.

1. Always fit all parts to the vehicle before painting. This will ensure a much better end result. Although the pieces are designed such that fitment is straightforward and often uses factory methods of attachment, some trimming or other slight modifications may be necessary for a perfect fit on your vehicle. There are slight variances from vehicle to vehicle which our components cannot accommodate for. **A perfect fit is possible—take the time to make it right BEFORE PAINTING.**

2. Be sure to properly prepare any surfaces to be painted. Use an appropriate wax/grease remover or other product to ensure that there are no oils, greases, or silicones on the surface. Scuff all surfaces to achieve an even, dull finish with no shiny areas. This will give the primer and paint a good surface to bond to.

3. Do not paint any areas where double sided paint is or will be applied. Mask these areas off as the tape will not adhere as well to a painted surface.

4. It is best to allow parts to air dry rather than force baking them in an oven or other heating device as this could affect the urethane material.

5. Depending on your vehicle and your parts, you may use two layers of mounting tape (included) for best adhesion.

Fitment of this kit involves replacing the entire front and rear bumper covers and removal of factory rocker panels and deck lid spoiler (if applicable).

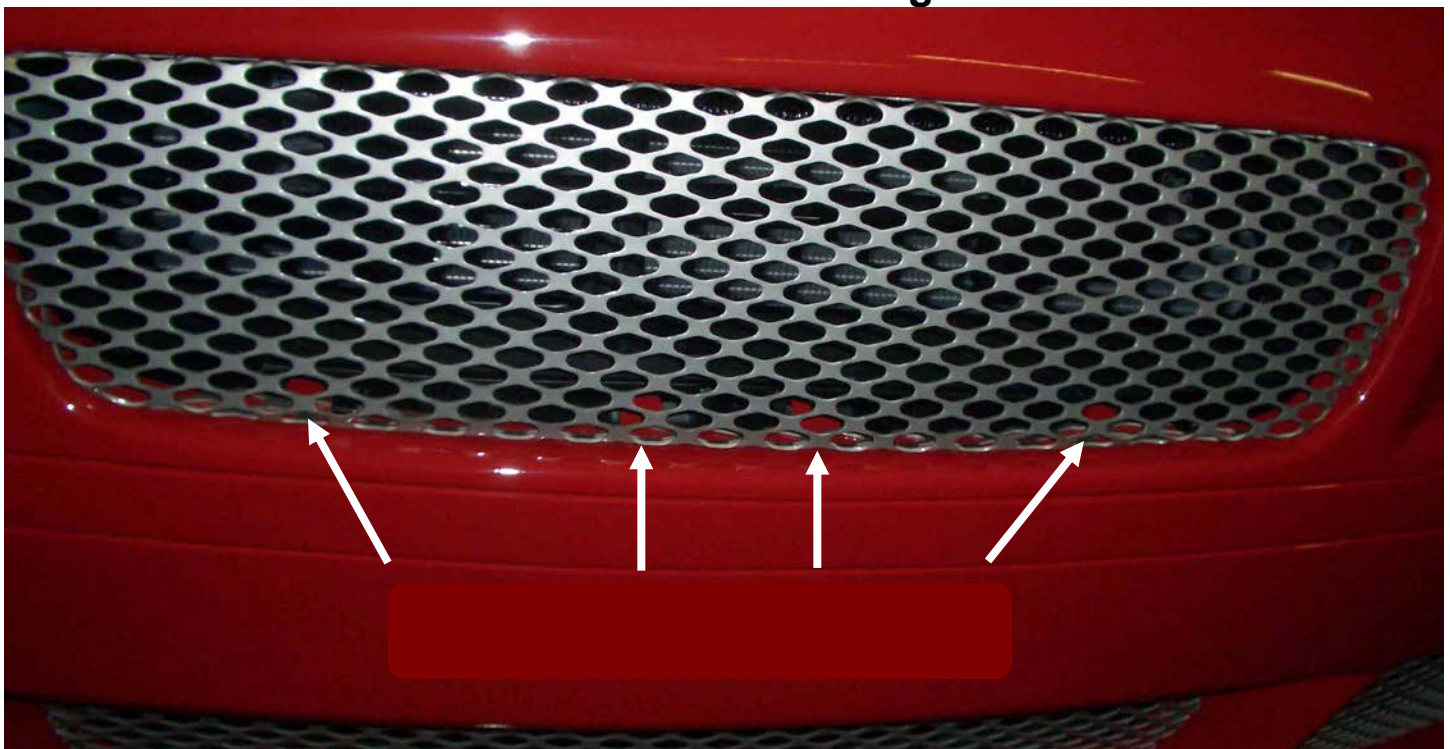
ELEVATE Aerodynamic Front Bumper

Area of attachment #1: Radiator Core Support.



Utilizes six fasteners across top of Bumper into radiator core support.

Area of attachment #2: Bottom Edge of Main Grille



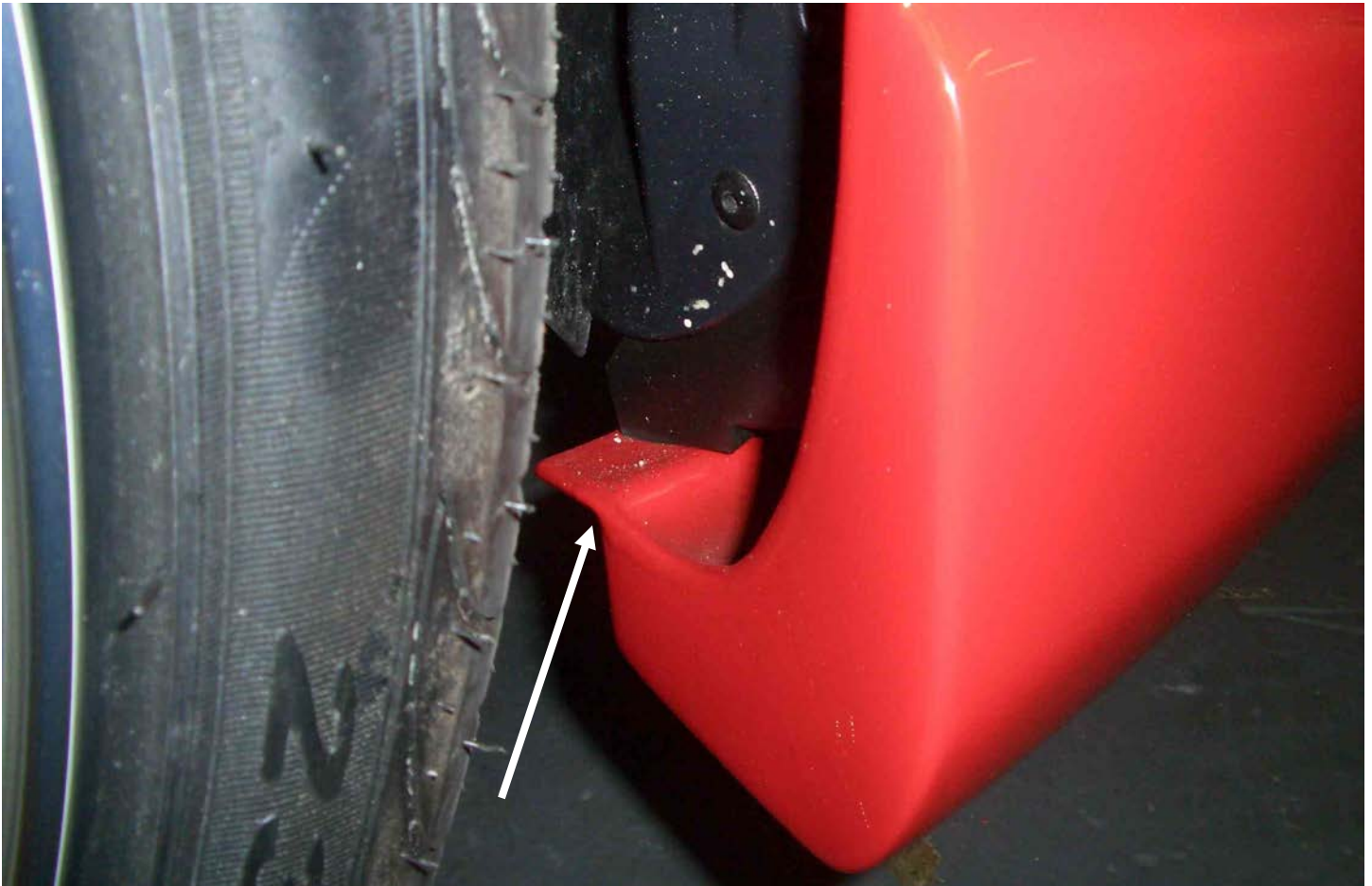
Four tabs at the bottom edge of main (upper grille) plug into slots in factory bumper support.

Area of attachment #3: Side Grilles



One tab on each side plugs into slots in factory bumper support.

Area of attachment #4: Bottom of Fender Well



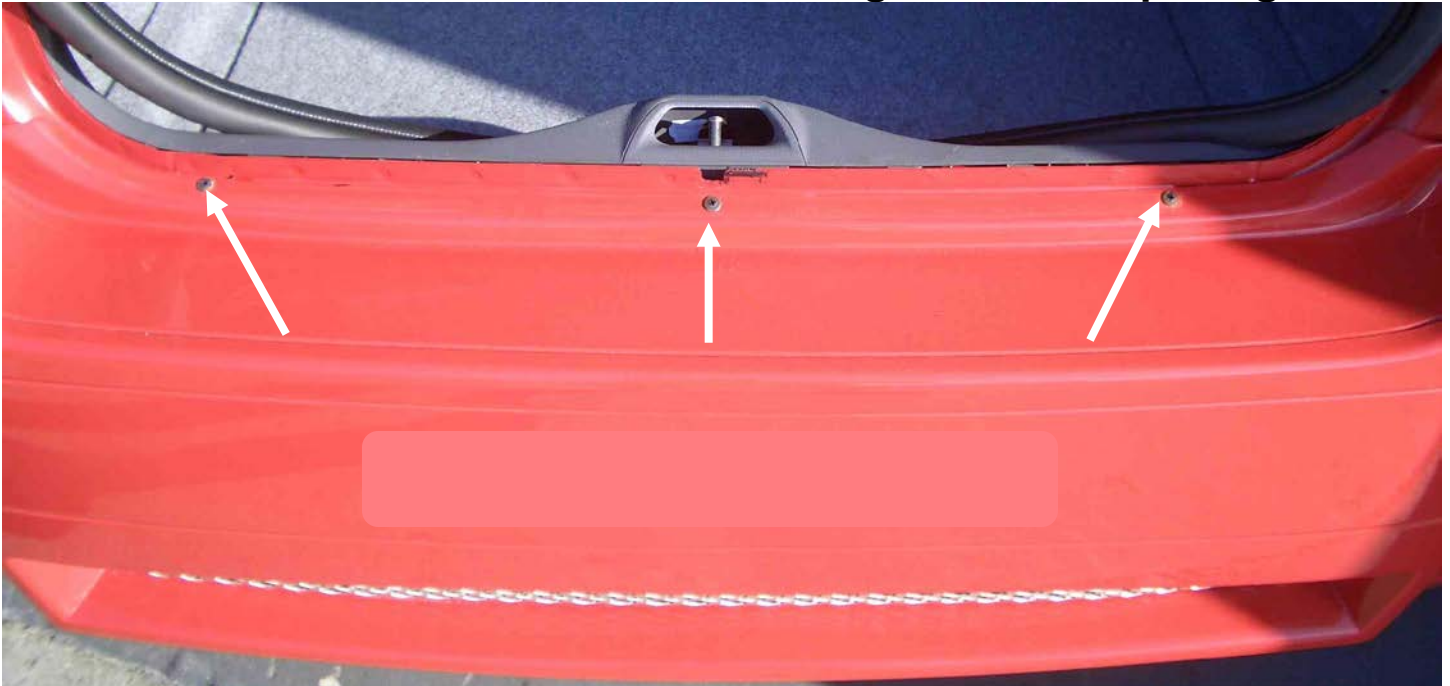
Attach bottom of Front Bumper to factory black plastic support.

Area of attachment #5: Inner Fender Well

Use the factory slide mechanism on the inner fender well to pull bumper back and tight to the car.

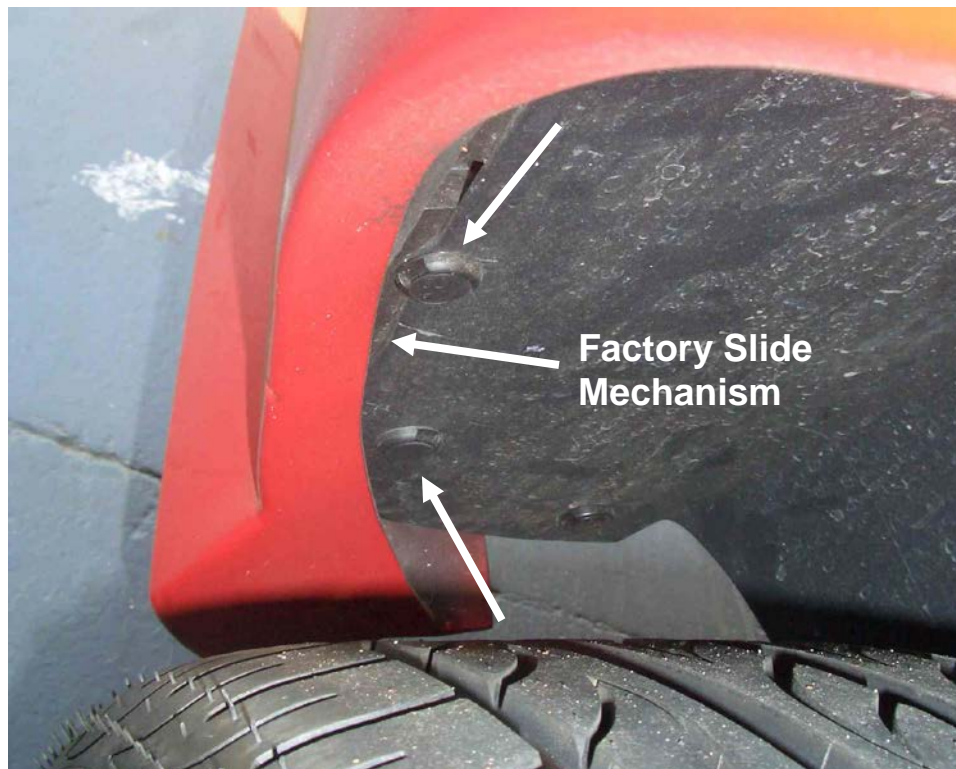
ELEVATE Aerodynamic Rear Bumper

Area of attachment #1: Bottom Edge of Trunk Opening



Peel back weather-strip from the bottom of the trunk opening and use self tapping screws to attach bumper cover.

Area of attachment #2: Inner Fender Well



Use factory slide mechanism to pull bumper tight.
Optional: Use fasteners if desired.

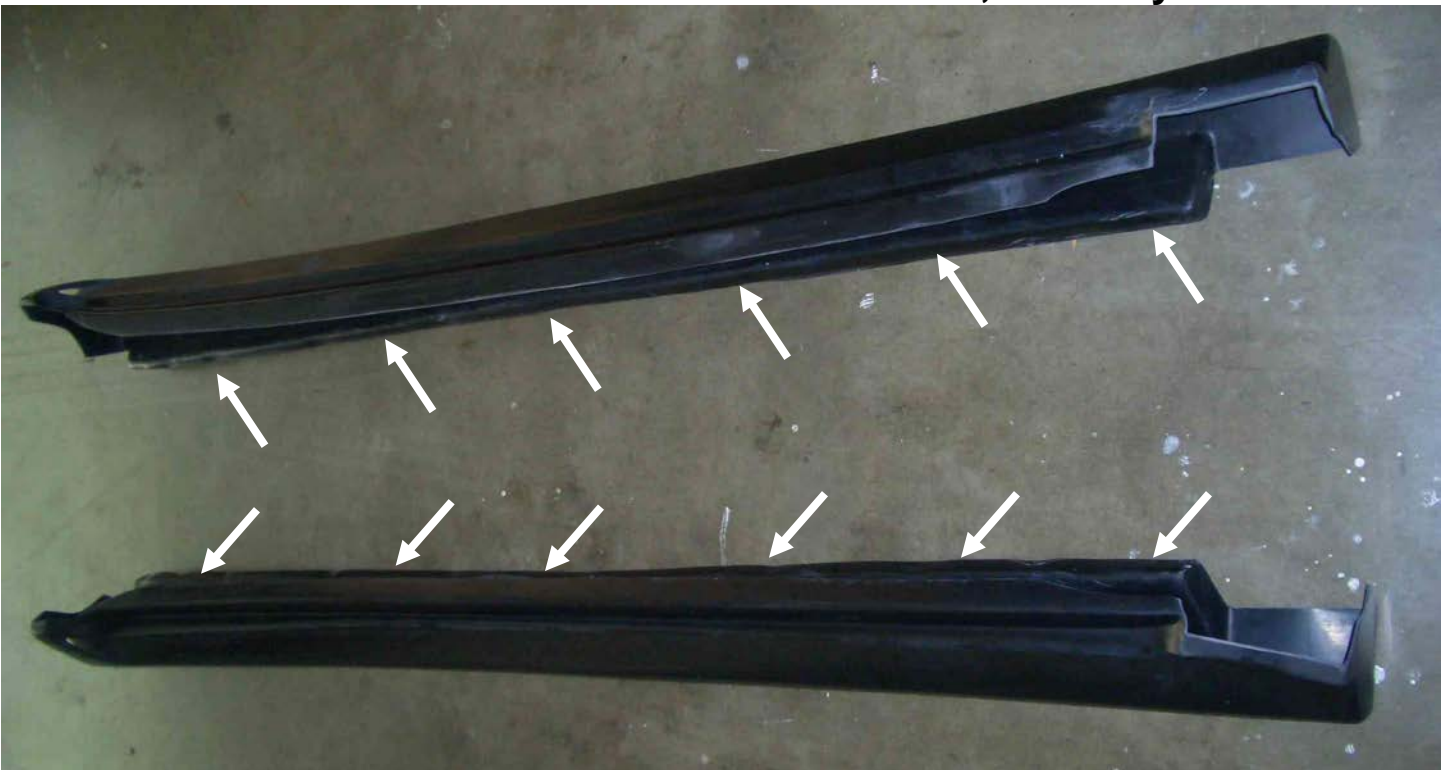
Area of attachment #3: Trunk Floor



Use fasteners to attach tabs to the underside of the trunk floor.

ELEVATE Aerodynamic Side Sills

Area of attachment #1: Underside of Car, Unibody Rails



Use self tapping screws to attach to unibody rails on underside of the car

Area of attachment #2: Top of Rocker Panels



Use quality, double stick tape to bond bottom edge of ELEVATE Side Sill to top surface of vehicle's painted rocker panel. This area is visible when the doors are opened.

Area of attachment #3: Front Inner Fender Well



Use fasteners to reattach rocker ends where factory rivets were removed.

Area of attachment #4: Rear Inner Fender Well



Use fasteners to reattach rocker ends where factory rivets were removed.

ELEVATE Deck Lid Spoiler



Use two rows of quality, 1/2" double stick tape to bond spoiler to trunk lid. Use two layers if needed.

ELEVATE Tail Light Trim



Use quality, 1/2" double stick tape to bond parts to tail lights.