

ELEVATE

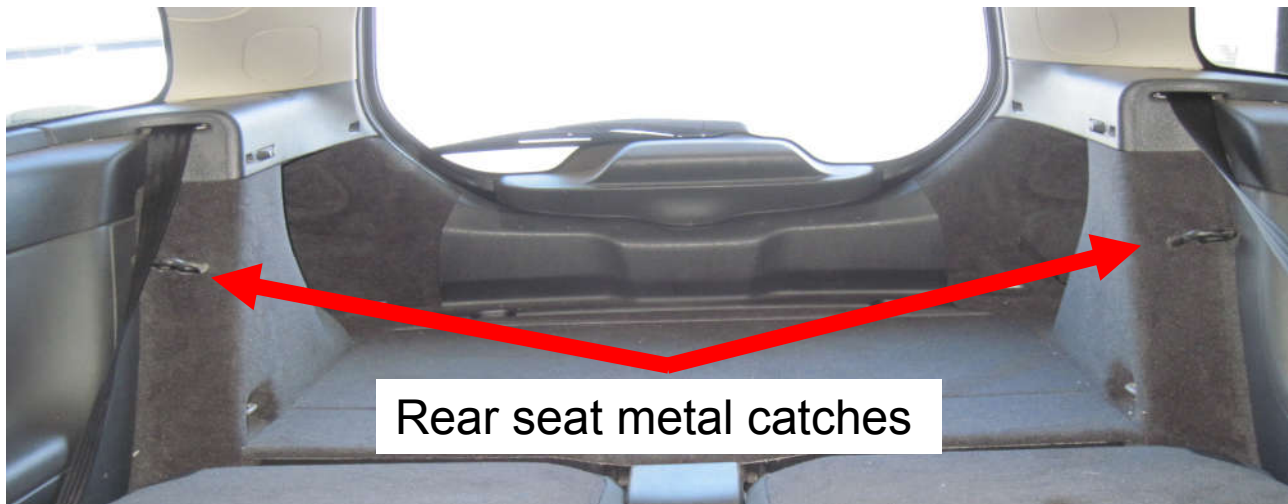
C30 Rear Chassis Brace (Fixed Version)

Tools needed:

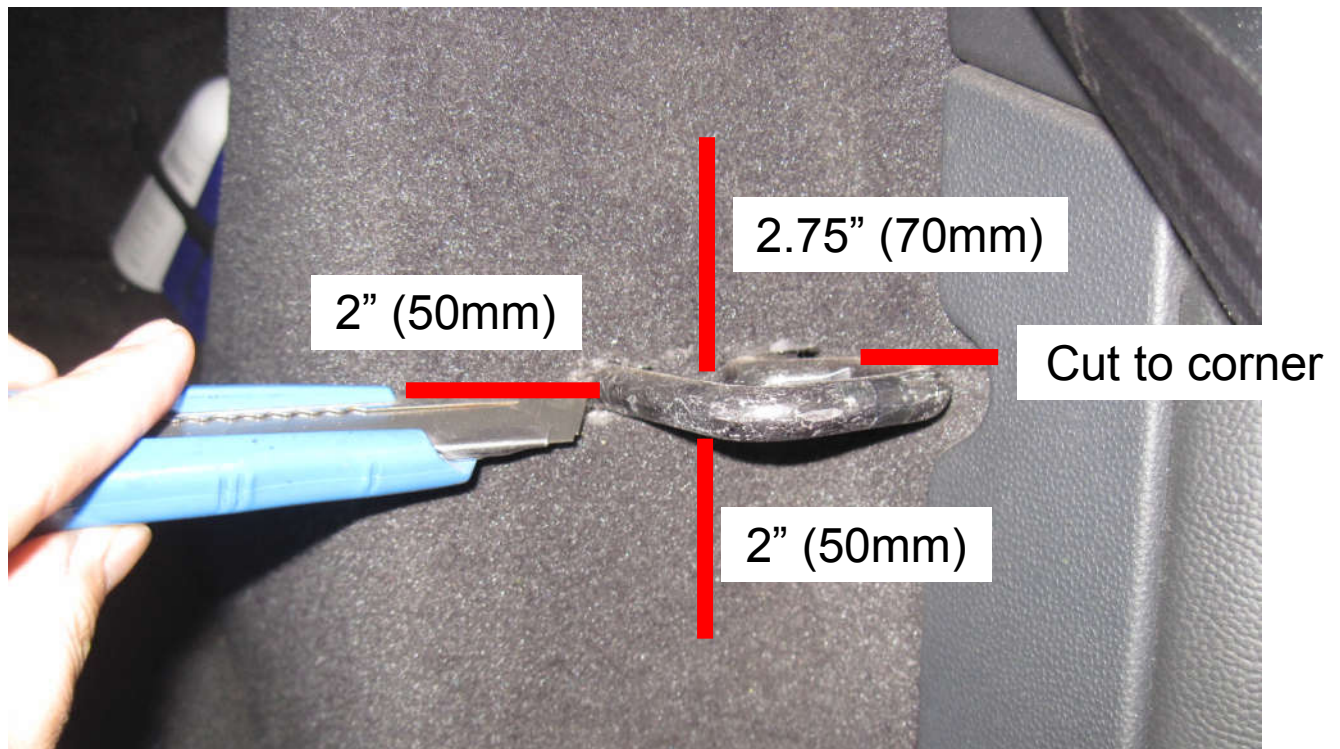
- 13mm Socket with short extension and ratchet
- Cutting blade
- Flat blade screwdriver or pry tool

Please completely read through these instructions to familiarize yourself with the installation.

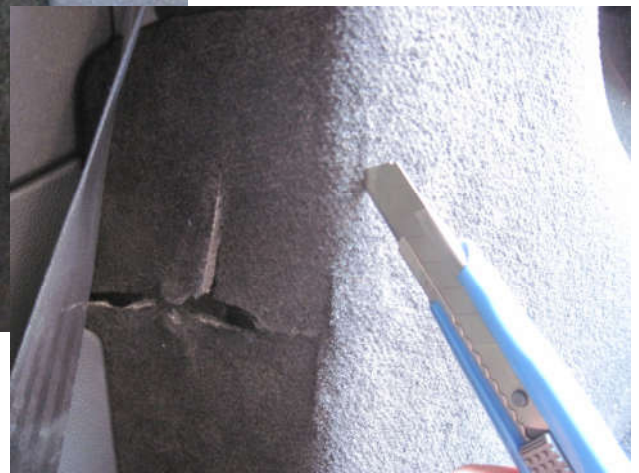
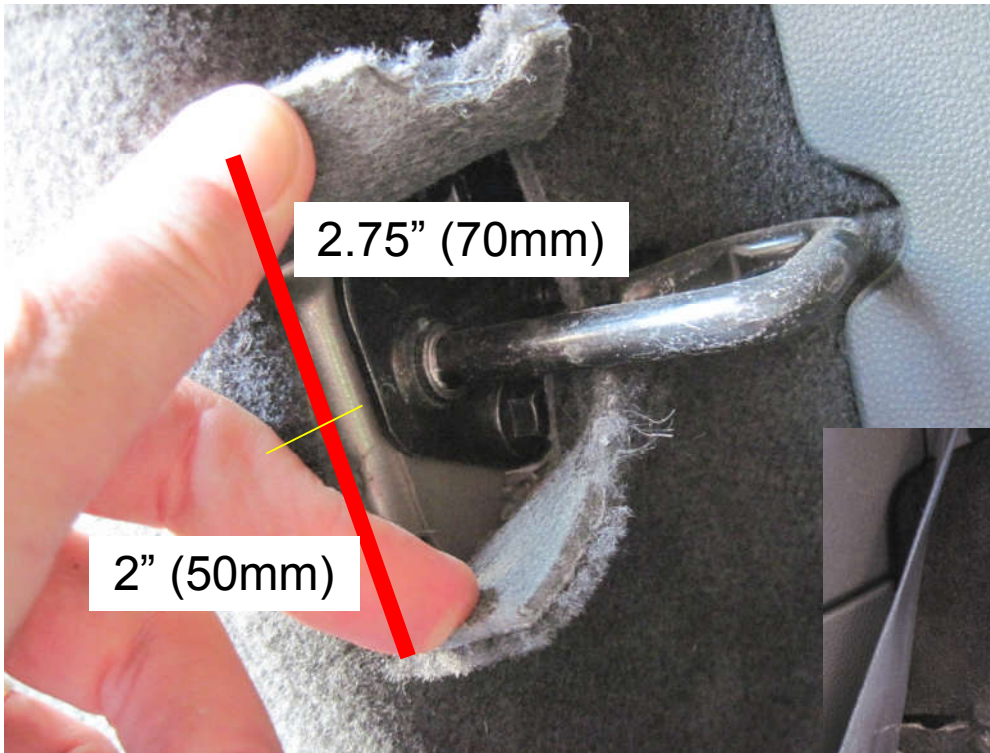
1. Fold the rear seats down and locate the two metal rear seat catches.



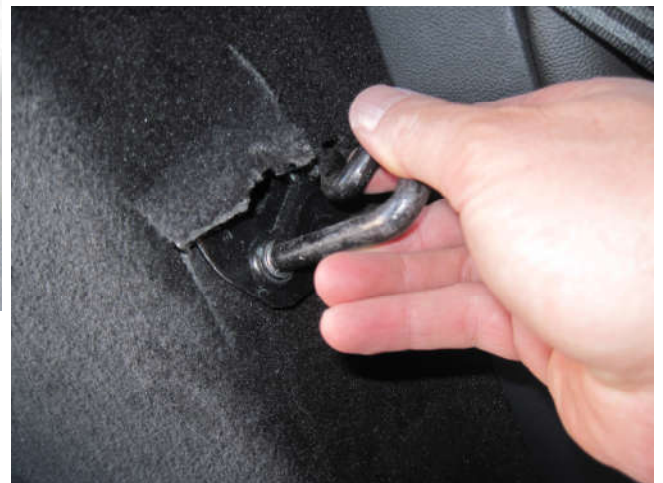
2. Using a fixed blade knife, cut carpet as shown. The vertical starting reference point is the center of the two metal sections of the catch. The horizontal cut begins at the catch. Use caution in cutting.



3. Peel back the carpet and see where the catch bolts to the chassis. Make a vertical cut just past the “corner” of the carpet, on the flat “wall” section (see inset picture of the other side of the vehicle being cut). This cut should be on the same plane as the chassis mounting area behind the catch bracket. After this vertical cut, you will be able to open up the carpet as shown.



4. Push any sound deadening material out of the way to gain access to the two bolts securing the catch to the chassis. Remove the two bolts (13mm head) and remove the catch.



5. Repeat the process for the other side, cutting the carpet and removing the catch.
6. Position the Rear Chassis Brace into position. The seat catch will mount on top of the Rear Chassis Brace, sandwiching the Rear Chassis Brace between the seat catch and the chassis mounting point. Make any additional carpet cuts as needed. Use a screwdriver or pry tool to peel back the carpet to position Brace flush against the chassis.



7. Position the seat catch on top of brace bracket and start all four bolts-do not completely tighten. Note that sometimes these bolts need to be run through an M10x1.5 die to clean the threads. The catch brackets have a reference tab and can only be installed one way.



8. Once all four bolts are started and the brace is in the proper position, tighten the bolts securely. Allow the carpet to return to its natural position.



9. Return the rear seats to their upright position and ensure the seat latches engage fully.



10. The Rear Chassis Brace can be removed at any time by removing the four bolts and reattaching the seat latch.

11. The powder coat finish on your Rear Chassis Brace can be wiped clean using a mild cleaner as you would use on a painted finish. Do not use any solvents as they may discolor the finish.